

Achillea millefolium 'Saucy Seduction' (Yarrow)

Achillea 'Saucy Seduction', 'Saucy Seduction' Yarrow, Common Yarrow, Milfoil, Carpenter's Weed



umbel flowers. 'Saucy Seduction' belongs to the Seduction series introduced by Blooms of Bressingham. Bred in the Netherland, the Yarrows of this series include 'Strawberry Seduction' (rich velvety red blooms) and 'Sunny Seduction' (pale yellow blooms).

- ★ Blooms for weeks from **early to late summer**, this eye-catching beauty easily enlivens any sunny corner of the garden.
- ★ **Easy care, drought, heat, humidity, deer and rabbit tolerant**, this Achillea is a perennial that is rich in many qualities aside from its good looks!
- ★ Grows up to 2 feet tall (60 cm) with a similar spread, in sturdy, upright clumps.
- ★ Thrives in **full sun** in **average, dry to medium moisture, well-drained soils**. **Light shade** is tolerated, but best coloring and flowering is obtained in full sun. **Dry soils** are also tolerated. Avoid rich, moist soils which would cause your Yarrow to get floppy or leggy. **Good drainage** is essential.
- ★ Vital ingredient of herbaceous **borders, cottage gardens, rock gardens, coastal garden, meadows** or **prairies**. This Yarrow is also valued for the excellent quality of its **cut flowers**, whether in bouquets or dried floral arrangements.
- ★ Yarrows are a must if you are trying to attract **butterflies!**
- ★ Deadheading will extend the bloom season and prevent your yarrow from spreading by seed. Cutting back after initial flowering will promote a rebloom. This plant self seeds actively and can naturalize quickly if not monitored.

Achillea, commonly known as Yarrow, belongs to the Asteraceae family, which also includes asters, chrysanthemums, and sunflowers. The genus was named after Achilles, hero of the Trojan Wars in Greek mythology, who used the plant to stop the bleeding and heal the wounds of his soldiers. Achillea millefolium (Common Yarrow) is native to most of Europe and temperate parts of western Asia. Brightening the garden throughout the summer, this perennial plant is versatile, easy to propagate and available in a wide range of sizes and colors.

Requirements

Hardiness	3 - 9
Heat Zones	1 - 9
Climate Zones	1, 2, 3, 4, 5, 6, 7, 8, 9, 10, 11, 12, 13, 14, 15, 16, 17, 18, 19, 20, 21, 22, 23, 24, A1, A2, A3
Plant Type	Perennials
Plant Family	Achillea - Yarrows

We use cookies on this website, you can [read about them here](#). To use the website as intended please

Spread	1' - 2' (30cm - 60cm)
Spacing	12" - 18" (30cm - 45cm)
Water Needs	Low
Maintenance	Average
Soil Type	Chalk, Loam, Sand
Soil pH	Acid, Alkaline, Neutral
Soil Drainage	Moist but Well-Drained, Well-Drained
Characteristics	Dried Arrangements, Cut Flowers, Fragrant, Showy
Tolerance	Deer, Drought, Rabbit, Dry Soil
Attracts	Butterflies
Garden Uses	<u>Beds and Borders</u>
Garden Styles	<u>Coastal Garden</u> , <u>Gravel and Rock Garden</u> , <u>Informal and Cottage</u> , <u>Prairie and Meadow</u>

Alternative Plants to Consider



Achillea 'Moonshine'

Evergreen, award-winning Achillea 'Moonshine' is...

[Add to Collection](#)

Achillea millefolium 'Paarika'



Achillea 'Coronation Gold'

Performs like a star! Achillea 'Coronation Gold'...

[Add to Collection](#)

Achillea millefolium 'Apricot'

We use cookies on this website, you can [read about them here](#). To use the website as intended please



[Add to Collection](#)



Achillea millefolium 'Pink Grapefruit' (Yarrow)

From deep rose to creamy pink! Good-looking,...

[Add to Collection](#)



Achillea millefolium 'Pomegranate' (Yarrow)

Good-looking, compact, bushy and heat loving,...

[Add to Collection](#)

Recommended Companion Plants

Sedum telephium 'Purple Emperor' (Stonecrop)

Long lived and drought tolerant, award-winner...

[Add to Collection](#)

Pennisetum setaceum 'Rubrum' (Purple Fountain Grass)

Requiring very little care and providing striking...

[Add to Collection](#)

We use cookies on this website, you can [read about them here](#). To use the website as intended please



Stipa tenuissima (Mexican Feather Grass)

For a beautiful textural presence! Stipa...

[Add to Collection](#)



Allium sphaerocephalon (Drumstick Allium)

Adds interest and movement to the border with its...

[Add to Collection](#)



We use cookies on this website, you can [read about them here](#). To use the website as intended please



One of the best and most colorful of all Blue...

[Add to Collection](#)



of...

[Learn More](#)

* Top picture is courtesy of Pioneer Gardens, Inc

While every effort has been made to describe these plants accurately, please keep in mind that height, bloom time, and color may differ in various climates. The description of these plants has been written based on numerous outside resources.

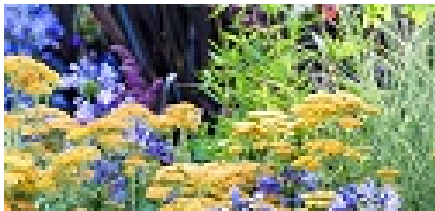
Similar Items

Garden

[A Lovely Border Idea with Achillea, Agapanthus and Grasses](#)

This charming summer border is a marriage of colors, shapes...

[Read More](#)



We use cookies on this website, you can [read about them here](#). To use the website as intended please



Garden

[A Long-Lasting Perennial Planting Idea with Kniphofia, Achillea and Leucanthemum](#)

Create seductive plant combinations like this one. Easy to...

[Read More](#)

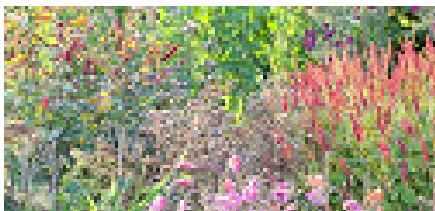


Garden

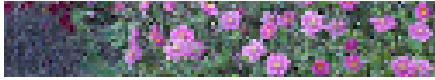
[A Charming Late Summer Garden Idea with Japanese Anemones and Mountain Fleece](#)

Bejeweled with Japanese Anemones and Mountain fleece, this...

[Read More](#)



We use cookies on this website, you can [read about them here](#). To use the website as intended please

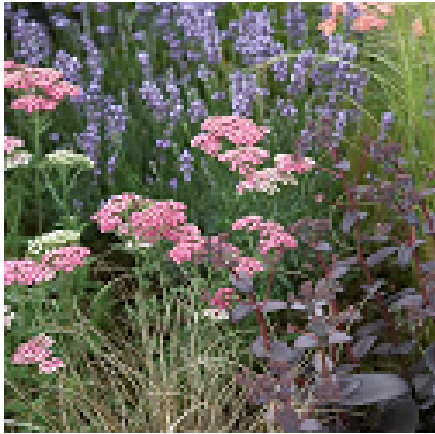


Garden

[A Long-Lasting Summer Idea for your Borders with Lavender, Achillea and Sedum](#)

If you are looking for a long-lasting border idea with...

[Read More](#)

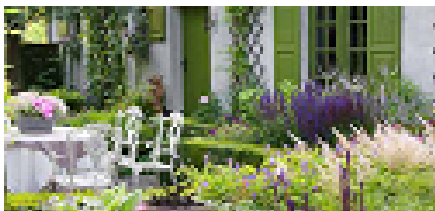


Garden

[A Pretty and Long-Lasting Garden Idea with Outstanding Plants](#)

This fascinating border has been created by landscape...

[Read More](#)



We use cookies on this website, you can [read about them here](#). To use the website as intended please



Garden

[A Colorful Summer Planting Idea with Achillea, Agastache, Eremurus & Nepeta](#)

Long-lasting and low maintenance! Variety and contrast...

[Read More](#)

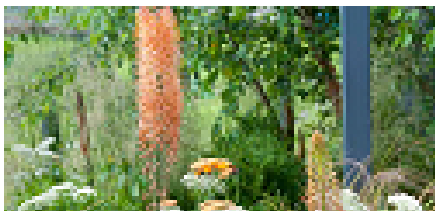


Garden

[A Long-Lasting Summer Idea for your Borders with Perennials, Bulbs & Grasses](#)

Long-lasting, drought tolerant and easy care!

[Read More](#)



We use cookies on this website, you can [read about them here](#). To use the website as intended please



Garden

[A Terrific Duo to Try: Achillea and Festuca](#)

Long-lasting and low maintenance!

[Read More](#)

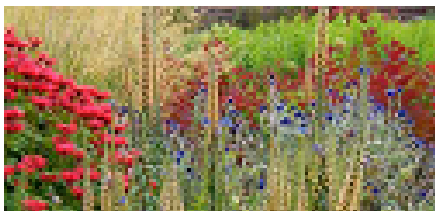


Garden

[A Cheerful Border Idea with Monarda, Achillea and Digitalis](#)

Attractive to butterflies, hummingbirds and low...

[Read More](#)



We use cookies on this website, you can [read about them here](#). To use the website as intended please



We use cookies on this website, you can [read about them here](#). To use the website as intended please